

CDCA5 (AX2108) Rabbit mAb

M0108

Key Features

Host Species

- Rabbit

Reactivity

- Human

Applications

- WB, IHC-P, ELISA

MW

- 28kDa (Calculated)
- 35kDa (Observed)

Isotype

- IgG

Recommended Dilution Ratios

Application

Western Blotting (WB)
 Immunohistochemistry (IHC) (Paraffin)
 ELISA

Dilution

1:500-2000
 1:50-200
 Recommended starting concentration is 1 µg/mL. Please optimize the concentration based on your specific assay requirements.

Storage

Storage at -15°C to -25°C/1 year (Do not lower than -25°C)
Storage buffer PBS, 50% glycerol, 0.05% Proclin 300, 0.05% BSA

Basic Information

Clonality Monoclonal
Clone Number AX2108
Immunogen A synthetic peptide corresponding to a sequence within amino acids 153-252 of human CDCA5 (Q96FF9).
Specificity The antibody can specifically recognize human CDCA5 protein.
Purification Affinity purification Protein A
Concentration Product concentration may vary by batch. Please refer to the product COA for details.

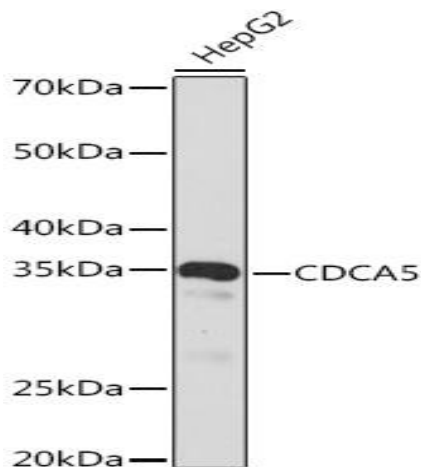
Target Information

Gene name CDCA5
Protein Name CDCA5

Database Link	Organism	Swiss Prot.	Gene ID
	Human	Q96FF9	113130
	Mouse	Q9CPY3	67849
	Rat		

Background

Predicted to enable chromatin binding activity. Involved in double-strand break repair; mitotic sister chromatid segregation; and regulation of cell cycle process. Located in nucleoplasm.

Validation Data

Western blot analysis of lysates from HepG2 cells, using CDCA5 Rabbit mAb (M0108) at 1:1000 dilution. Secondary antibody: HRP-conjugated Goat anti-Rabbit IgG (H+L) (SA0002) at 1:10000 dilution. Lysates/proteins: 25 μ g per lane. Blocking buffer: 3% nonfat dry milk in TBST. Detection: ECL Basic Kit. Exposure time: 30s.