

## MYPT1 (PT0453R) PT® Rabbit mAb

CatalogNo: YM8290 **Recombinant** 

### Key Features

#### Host Species

- Rabbit

#### Reactivity

- Human,

#### Applications

- WB,IHC,IF,IP,ELISA

#### MW

- 140kD (Calculated)  
140kD (Observed)

#### Isotype

- IgG,Kappa

### Recommended Dilution Ratios

IHC 1:200-1:1000

WB 1:2000-1:10000

IF 1:200-1:1000

ELISA 1:5000-1:20000

IP 1:50-1:200

### Storage

**Storage\*** -15°C to -25°C/1 year(Do not lower than -25°C)

### Basic Information

**Clonality** Monoclonal

**Clone Number** PT0453R

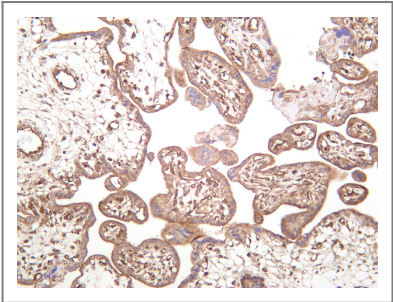
### Immunogen Information

**Specificity** Endogenous

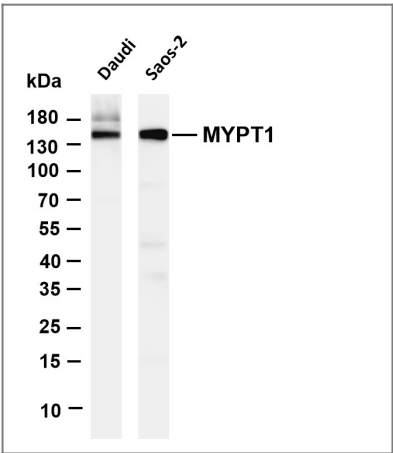
### Target Information

Gene name	PPP1R12A		
Protein Name	Protein phosphatase 1 regulatory subunit 12A		
	Organism	Gene ID	UniProt ID
	Human	<a href="#">4659</a> ;	<a href="#">O14974</a> ;
	Mouse	<a href="#">17931</a> ;	<a href="#">Q9DBR7</a> ;
	Rat	<a href="#">116670</a> ;	<a href="#">Q10728</a> ;
Cellular Localization	Cytoplasm		
Tissue specificity	Expressed in striated muscles, specifically in type 2a fibers (at protein level).		
Function	Function:Regulates myosin phosphatase activity.,PTM:Phosphorylated by CIT (Rho-associated kinase) (By similarity). Phosphorylated cooperatively by ROCK1 and CDC42BP on Thr-696. Phosphorylated on upon DNA damage, probably by ATM or ATR.,sequence Caution:Contaminating sequence. Potential poly-A sequence.,similarity:Contains 6 ANK repeats.,subcellular location:Along actomyosin filaments and stress fibers.,subunit:PP1 comprises a catalytic subunit, PPP1CA, PPP1CB or PPP1CC, and one or several targeting or regulatory subunits. PPP1R12A mediates binding to myosin. Interacts with ARHA and CIT (By similarity). Binds PPP1R12B, ROCK1 and IL16.,		

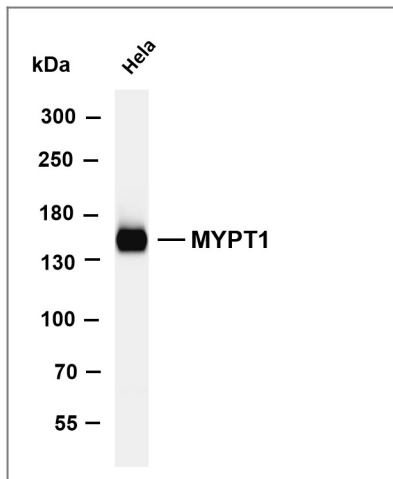
| Validation Data



Human placenta was stained with anti-MYPT1 (PT0453R) rabbit antibody



Various whole cell lysates were separated by 4-20% SDS-PAGE, and the membrane was blotted with anti-MYPT1 (PT0453R) antibody. The HRP-conjugated Goat anti-Rabbit IgG(H + L) antibody was used to detect the antibody. Lane 1: Daudi Lane 2: Saos-2 Predicted band size: 140kDa  
Observed band size: 140kDa



Various whole cell lysates were separated by 4-8% SDS-PAGE, and the membrane was blotted with anti-MYPT1 (PT0453R) antibody. The HRP-conjugated Goat anti-Rabbit IgG(H + L) antibody was used to detect the antibody. Lane 1: HeLa Predicted band size: 140kDa Observed band size: 140kDa

## Contact information

Orders: [order@immunoway.com](mailto:order@immunoway.com)  
Support: [tech@immunoway.com](mailto:tech@immunoway.com)  
Telephone: 408-747-0189 (USA) 400-8787-807(China)  
Website: <http://www.immunoway.com>  
Address: 2200 Ringwood Ave San Jose, CA 95131 USA



Please scan the QR code to access additional product information:  
**MYPT1 (PT0453R)**  
**PT® Rabbit mAb**

For Research Use Only. Not for Use in Diagnostic Procedures.

[Antibody](#) | [ELISA Kits](#) | [Protein](#) | [Reagents](#)