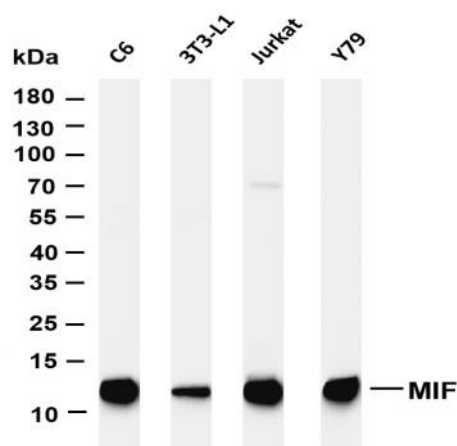


**MIF (PT0418R) rabbit mAb**

<b>Catalog No :</b>	YM8260
<b>Reactivity :</b>	Human; Mouse; Rat;
<b>Applications :</b>	WB;IHC;IF;IP;ELISA
<b>Target :</b>	MIF
<b>Fields :</b>	>>Tyrosine metabolism;>>Phenylalanine metabolism;>>Metabolic pathways
<b>Gene Name :</b>	MIF
<b>Protein Name :</b>	Macrophage migration inhibitory factor
<b>Human Gene Id :</b>	4282
<b>Human Swiss Prot No :</b>	P14174
<b>Mouse Gene Id :</b>	17319
<b>Mouse Swiss Prot No :</b>	P34884
<b>Rat Gene Id :</b>	81683
<b>Rat Swiss Prot No :</b>	P30904
<b>Specificity :</b>	endogenous
<b>Formulation :</b>	PBS, 50% glycerol, 0.05% Proclin 300, 0.05%BSA
<b>Source :</b>	Monoclonal, rabbit, IgG, Kappa
<b>Dilution :</b>	IHC 1:1000-1:4000;WB 1:1000-1:5000;IF 1:200-1:1000;ELISA 1:5000-1:20000;IP 1:50-1:200;
<b>Purification :</b>	Protein A

<b>Storage Stability :</b>	-15 °C to -25 °C/1 year(Do not lower than -25 °C)
<b>Molecularweight :</b>	13kD
<b>Observed Band :</b>	13kD
<b>Cell Pathway :</b>	Tyrosine metabolism;Phenylalanine metabolism;
<b>Background :</b>	This gene encodes a lymphokine involved in cell-mediated immunity, immunoregulation, and inflammation. It plays a role in the regulation of macrophage function in host defense through the suppression of anti-inflammatory effects of glucocorticoids. This lymphokine and the JAB1 protein form a complex in the cytosol near the peripheral plasma membrane, which may indicate an additional role in integrin signaling pathways. [provided by RefSeq, Jul 2008],
<b>Function :</b>	catalytic activity:Keto-phenylpyruvate = enol-phenylpyruvate.,disease:Genetic variations in MIF are associated with susceptibility to systemic juvenile rheumatoid arthritis [MIM:604302]. Systemic juvenile rheumatoid arthritis is juvenile chronic arthritis associated with severe, debilitating, extraarticular features, and occasionally fatal complications. Despite medical treatment, many children still experience early joint destruction, necessitating surgical replacement.,function:The expression of MIF at sites of inflammation suggest a role for the mediator in regulating the function of macrophage in host defense. Also acts as a phenylpyruvate tautomerase.,similarity:Belongs to the MIF family.,subunit:Homotrimer. Interacts with COPS5 and BNIPL.,
<b>Subcellular Location :</b>	Cytoplasm
<b>Expression :</b>	Brain,Lens,Liver,Lung,Platelet,Skin

## Products Images



Various whole cell lysates were separated by 4-20% SDS-PAGE, and the membrane was blotted with anti-MIF (PT0418R) antibody. The HRP-conjugated Goat anti-Rabbit IgG(H + L) antibody was used to detect the antibody. Lane 1: C6 Lane 2: 3T3-L1 Lane 3: Jurkat Lane 4: Y79 Predicted band size: 13kDa Observed band size: 13kDa