

## RBMY1A1 (AX0459) Rabbit mAb

**M3671**

### Key Features

#### Host Species

- Rabbit

#### Reactivity

- Human

#### Applications

- WB,IHC

#### MW

- 
- 55kDa (Observed)

#### Isotype

- IgG

### Recommended Dilution Ratios

#### Application

- Western Blotting (WB)
- Immunohistochemistry (IHC) (Paraffin)

#### Dilution

- 1:1000-5000
- 1:100-300

### Storage

- Storage at** -15°C to -25°C/1 year(Do not lower than -25°C)
- Storage buffer** PBS, 50% glycerol, 0.05% Proclin 300, 0.05%BSA

### Basic Information

- Clonality** Monoclonal
- Clone Number** AX0459
- Immunogen** Recombinant protein of the human RBMY1A1 protein.
- Specificity** The antibody can specifically recognize human RBMY1A1 protein.
- Purification** Affinity purification Protein A
- Concentration** Product concentration may vary by batch. Please refer to the product COA for details.

### Target Information

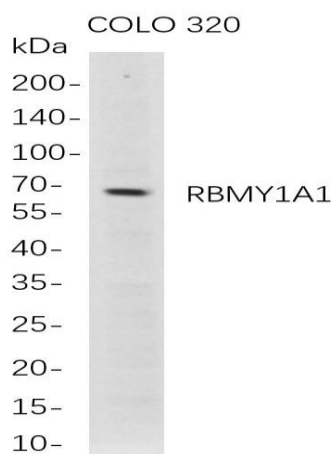
- Gene name** RBMY1A1,RBM1,RBM2,YRRM1,YRRM2
- Protein Name** RBMY1A1

Database Link	Organism	Swiss Prot.	Gene ID
	Human	P0DJD3	5940
	Mouse	O35698	100862365
	Rat		

## Background

This gene encodes a protein containing an RNA-binding motif in the N-terminus and four SRGY (serine, arginine, glycine, tyrosine) boxes in the C-terminus. This protein is thought to function as a splicing regulator during spermatogenesis. Multiple closely related paralogs of this gene are found in a gene cluster in the AZFb azoospermia factor region of chromosome Y. Most of these related copies are thought to be pseudogenes, though several likely encode functional proteins. [provided by RefSeq, Mar 2016]

## Validation Data



Western Blot analysis of COLO 320 whole cell lysates were separated by 4-20% SDS-PAGE, and the membrane was blotted with anti-RBMY1A1 rabbit mAb. The HRP-conjugated Goat anti-Rabbit IgG(H + L) antibody was used to detect the antibody.