

FXR1 (AX0093) Rabbit mAb

M3076

Key Features

Host Species

- Rabbit

Reactivity

- Human, Mouse, Rat,

Applications

- WB,IHC,IF,IP,ELISA

MW

- 70kDa (Calculated)
- 70-84kDa (Observed)

Isotype

- IgG

Recommended Dilution Ratios

Application

Western Blotting (WB)
 Immunohistochemistry (IHC) (Paraffin)
 IF/ICC
 ELISA
 Immunoprecipitation (IP)

Dilution

1:1000-5000
 1:200-1000
 1:200-1000
 1:5000-20000
 1:50-200

Storage

Storage at	-15°C to -25°C/1 year (Do not lower than -25°C)
Storage buffer	PBS, 50% glycerol, 0.05% Proclin 300, 0.05%BSA

Basic Information

Clonality	Monoclonal
Clone Number	AX0093
Immunogen	Recombinant protein of the human FXR1 protein.
Specificity	The antibody can specifically recognize human FXR1 protein.
Purification	Affinity purification Protein A
Concentration	Product concentration may vary by batch. Please refer to the product COA for details.

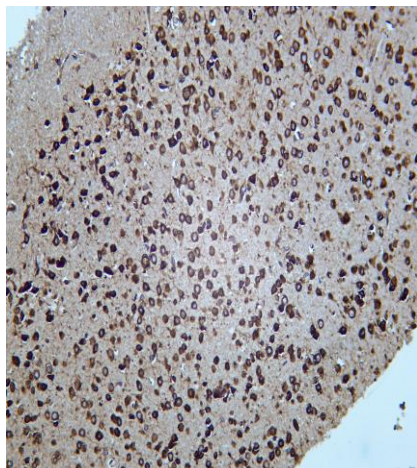
Target Information

Gene name	FXR1		
Protein Name	FXR1		
Database Link	Organism	Swiss Prot.	Gene ID
	Human	P51114	8087
	Mouse	Q61584	14359
	Rat	Q5XI81	361927

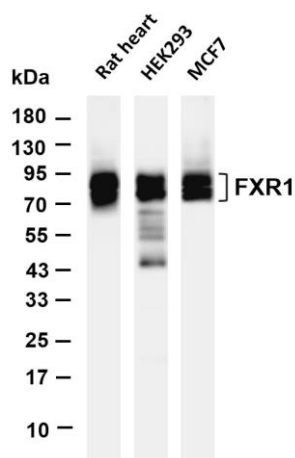
Background

The protein encoded by this gene is an RNA binding protein that interacts with the functionally-similar proteins FMR1 and FXR2. These proteins shuttle between the nucleus and cytoplasm and associate with polyribosomes, predominantly with the 60S ribosomal subunit. Three transcript variants encoding different isoforms have been found for this gene. [provided by RefSeq, Jul 2008]

Validation Data



Mouse brain was stained with Anti-FXR1 (PT0144R) rabbit antibody



Various whole cell lysates were separated by 4-20% SDS-PAGE, and the membrane was blotted with anti-FXR1 (PT0144R) antibody. The HRP-conjugated Goat anti-Rabbit IgG(H + L) antibody was used to detect the antibody.

Lane 1: Rat heart

Lane 2: HEK293

Lane 3: MCF7

Predicted band size: 70kDa

Observed band size: 78-84kDa