

KCTD3 (AX0434) Rabbit mAb

M3646

Key Features

Host Species

- Rabbit

Reactivity

- Human

Applications

- WB

MW

-
- 90kDa (Observed)

Isotype

- IgG

Recommended Dilution Ratios

Application

Western Blotting (WB)

Dilution

1:1000-5000

Storage

Storage at -15°C to -25°C/1 year (Do not lower than -25°C)

Storage buffer PBS, 50% glycerol, 0.05% Proclin 300, 0.05% BSA

Basic Information

Clonality Monoclonal

Clone Number AX0434

Immunogen Recombinant protein of the human KCTD3 protein.

Specificity The antibody can specifically recognize human KCTD3 protein.

Purification Affinity purification Protein A

Concentration Product concentration may vary by batch. Please refer to the product COA for details.

Target Information

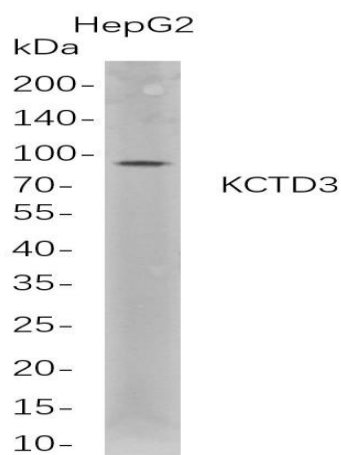
Gene name KCTD3

Protein Name KCTD3

Database Link	Organism	Swiss Prot.	Gene ID
	Human	Q9Y597	51133
	Mouse	Q8BFX3	226823
	Rat		

Background

This gene encodes a member of the potassium channel tetramerization-domain containing (KCTD) protein family. Members of this protein family regulate the biophysical characteristics of ion channels. In mouse, this protein interacts with hyperpolarization-activated cyclic nucleotide-gated channel complex 3 and enhances its cell surface expression and current density. Alternative splicing results in multiple transcript variants. [provided by RefSeq, Feb 2016],

Validation Data

Western Blot analysis of HepG2 whole cell lysates were separated by 4-20% SDS-PAGE, and the membrane was blotted with anti-KCTD3 rabbit mAb. The HRP-conjugated Goat anti-Rabbit IgG(H + L) antibody was used to detect the antibody.