

YTHDF2 (PT0426R) rabbit mAb

Catalog No :	YM8268
Reactivity :	Human; Mouse; Rat;
Applications :	WB;IHC;IF;IP;ELISA
Target :	YTHD2
Gene Name :	YTHDF2 HGRG8
Protein Name :	YTH domain family protein 2 (CLL-associated antigen KW-14) (High-glucose-regulated protein 8) (Renal carcinoma antigen NY-REN-2)
Human Gene Id :	51441
Human Swiss Prot No :	Q9Y5A9
Specificity :	endogenous
Formulation :	PBS, 50% glycerol, 0.05% Proclin 300, 0.05%BSA
Source :	Monoclonal, rabbit, IgG, Kappa
Dilution :	IHC 1:200-1:1000;WB 1:1000-1:5000;IF 1:200-1:1000;ELISA 1:5000-1:20000;IP 1:50-1:200;
Purification :	Protein A
Storage Stability :	-15°C to -25°C/1 year(Do not lower than -25°C)
Molecularweight :	62kD
Observed Band :	62kD
Background :	This gene encodes a member of the YTH (YT521-B homology) superfamily containing YTH domain. The YTH domain is typical for the eukaryotes and is particularly abundant in plants. The YTH domain is usually located in the middle of the protein sequence and may function in binding to RNA. In addition to a YTH

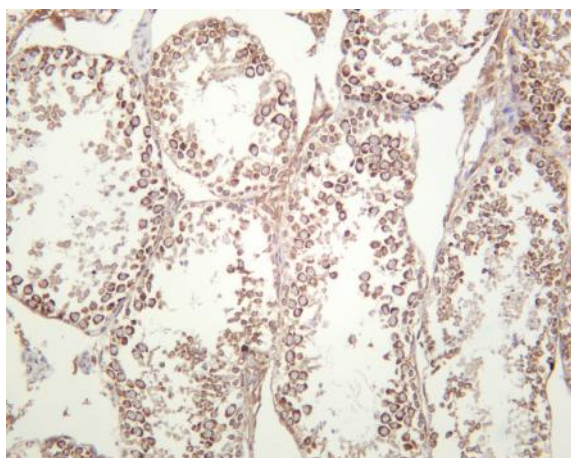
domain, this protein has a proline rich region which may be involved in signal transduction. An Alu-rich domain has been identified in one of the introns of this gene, which is thought to be associated with human longevity. In addition, reciprocal translocations between this gene and the Runx1 (AML1) gene on chromosome 21 has been observed in patients with acute myeloid leukemia. This gene was initially mapped to chromosome 14, which was later turned out to be a pseudogene. Alternatively spliced transcript variants encoding different isoforms have been identified in this gene

Function : similarity:Contains 1 YTH domain.,

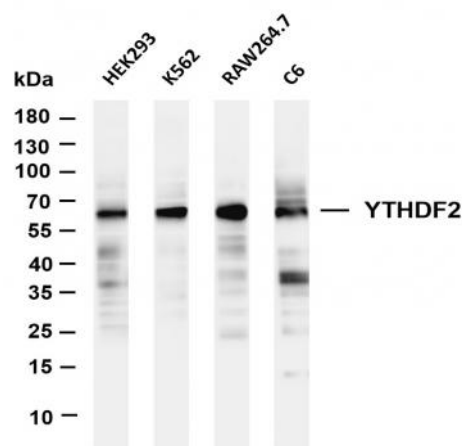
Subcellular Location : Cytoplasm, Nucleus

Expression : Highly expressed in induced pluripotent stem cells (iPSCs) and down-regulated during neural differentiation.

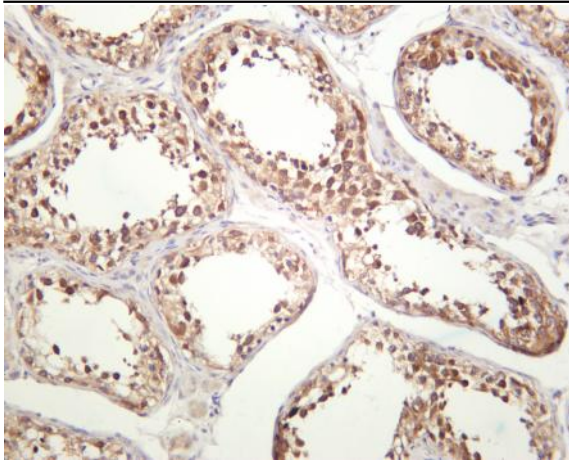
Products Images



Mouse testis was stained with anti-YTHDF2 (PT0426R) rabbit antibody



Various whole cell lysates were separated by 4-20% SDS-PAGE, and the membrane was blotted with anti-YTHDF2 (PT0426R) antibody. The HRP-conjugated Goat anti-Rabbit IgG(H + L) antibody was used to detect the antibody. Lane 1: HEK293 Lane 2: K562 Lane 3: RAW264.7 Lane 4: C6 Predicted band size: 62kDa Observed band size: 62kDa



Human testis was stained with anti-YTHDF2 (PT0426R) rabbit antibody