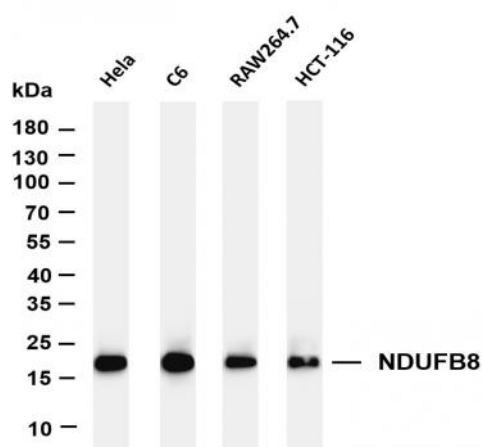


NDUFB8 (PT0369R) rabbit mAb

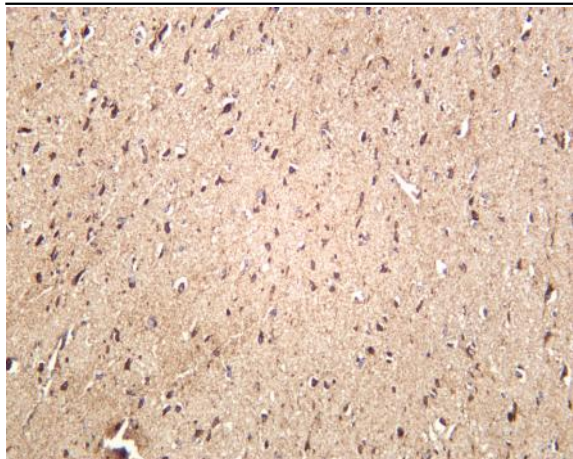
Catalog No :	YM8221
Reactivity :	Human; Mouse; Rat;
Applications :	WB;IHC;IF;IP;ELISA
Target :	NDUB8
Fields :	>>Oxidative phosphorylation;>>Metabolic pathways;>>Thermogenesis;>>Retrograde endocannabinoid signaling;>>Non-alcoholic fatty liver disease;>>Alzheimer disease;>>Parkinson disease;>>Amyotrophic lateral sclerosis;>>Huntington disease;>>Prion disease;>>Pathways of neurodegeneration - multiple diseases;>>Chemical carcinogenesis - reactive oxygen species;>>Diabetic cardiomyopathy
Gene Name :	NDUFB8
Protein Name :	NADH dehydrogenase [ubiquinone] 1 beta subcomplex subunit 8, mitochondrial (Complex I-ASHI) (CI-ASHI) (NADH-ubiquinone oxidoreductase ASHI subunit)
Human Gene Id :	4714
Human Swiss Prot No :	O95169
Mouse Swiss Prot No :	Q9D6J5
Specificity :	endogenous
Formulation :	PBS, 50% glycerol, 0.05% Proclin 300, 0.05%BSA
Source :	Monoclonal, rabbit, IgG, Kappa
Dilution :	IHC 1:200-1:1000, WB 1:1000-1:5000, IF 1:200-1:1000, ELISA 1:5000-1:20000, IP 1:50-1:200,
Purification :	Protein A
Storage Stability :	-15°C to -25°C/1 year(Do not lower than -25°C)

Molecularweight :	22kD
Observed Band :	22kD
Cell Pathway :	Oxidative phosphorylation;Alzheimer's disease;Parkinson's disease;Huntington's disease;
Background :	function:Accessory subunit of the mitochondrial membrane respiratory chain NADH dehydrogenase (Complex I), that is believed to be not involved in catalysis. Complex I functions in the transfer of electrons from NADH to the respiratory chain. The immediate electron acceptor for the enzyme is believed to be ubiquinone.,similarity:Belongs to the complex I NDUFB8 subunit family.,subunit:Complex I is composed of 45 different subunits.,
Function :	function:Accessory subunit of the mitochondrial membrane respiratory chain NADH dehydrogenase (Complex I), that is believed to be not involved in catalysis. Complex I functions in the transfer of electrons from NADH to the respiratory chain. The immediate electron acceptor for the enzyme is believed to be ubiquinone.,similarity:Belongs to the complex I NDUFB8 subunit family.,subunit:Complex I is composed of 45 different subunits.,
Subcellular Location :	Mitochondrion inner membrane
Expression :	Blood,Brain,Lung,Umbilical cord blood,

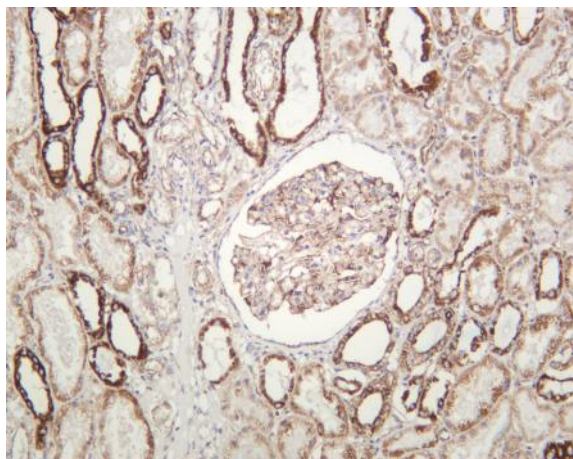
Products Images



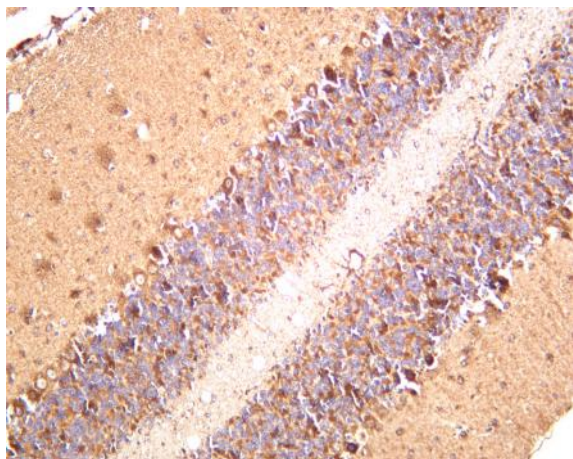
Various whole cell lysates were separated by 4-20% SDS-PAGE, and the membrane was blotted with anti-NDUFB8 (PT0369R) antibody. The HRP-conjugated Goat anti-Rabbit IgG(H + L) antibody was used to detect the antibody. Lane 1: HeLa Lane 2: C6 Lane 3: RAW264.7 Lane 4: HCT-116 Predicted band size: 22kDa Observed band size: 22kDa



Human brain was stained with anti-NDUFB8 (PT0369R) rabbit antibody



Human kidney was stained with anti-NDUFB8 (PT0369R) rabbit antibody



Mouse brain was stained with anti-NDUFB8 (PT0369R) rabbit antibody