

CCL11 / Eotaxin (AX2186) Rabbit mAb

M0186

Key Features

Host Species

- Rabbit

Reactivity

- Mouse

Applications

- WB, ELISA

MW

- 11kDa (Calculated)
- 42kDa (Observed)

Isotype

- IgG

Recommended Dilution Ratios

Application

Western Blotting (WB)
 ELISA

Dilution

1:1000-4000

Recommended starting concentration is 1 µg/mL. Please optimize the concentration based on your specific assay requirements.

Storage

Storage at -15°C to -25°C/1 year(Do not lower than -25°C)

Storage buffer PBS, 50% glycerol, 0.05% Proclin 300, 0.05%BSA

Basic Information

Clonality Monoclonal

Clone Number AX2186

Immunogen Recombinant fusion protein containing a sequence corresponding to amino acids 26-97 of mouse CCL11 / Eotaxin (NP_035460.1).

Specificity The antibody can specifically recognize human CCL11 / Eotaxin protein.

Purification Affinity purification Protein A

Concentration Product concentration may vary by batch. Please refer to the product COA for details.

Target Information

Gene name CCL11

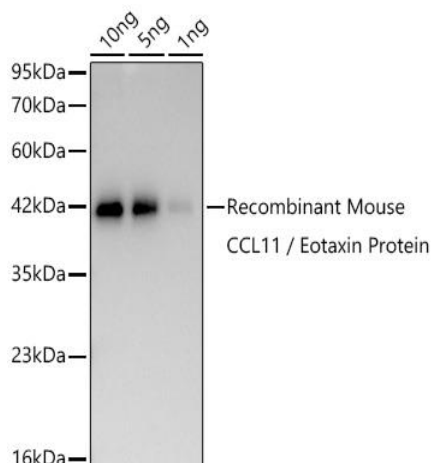
Protein Name CCL11 / Eotaxin

Database Link	Organism	Swiss Prot.	Gene ID
	Human	P51671	6356
	Mouse	P48298	20292
	Rat	P97545	29397

Background

Predicted to enable CCR3 chemokine receptor binding activity; chemokine activity; and protein dimerization activity. Involved in several processes, including modulation of age-related behavioral decline; negative regulation of neurogenesis; and positive regulation of angiogenesis. Acts upstream of or within branching involved in mammary gland duct morphogenesis and mammary duct terminal end bud growth. Predicted to be located in extracellular region. Predicted to be active in extracellular space. Is expressed in embryo; endocardial lining; liver parenchyma; liver vasculature; and yolk sac blood vessel. Human ortholog(s) of this gene implicated in asthma; human immunodeficiency virus infectious disease; hyperglycemia; and multiple sclerosis. Orthologous to several human genes including CCL11 (C-C motif chemokine ligand 11).

Validation Data



Western blot analysis of lysates from Recombinant Mouse CCL11 / Eotaxin Protein (RP01635) using CCL11 / Eotaxin Rabbit mAb (M0186) at 1:1000 dilution incubated overnight at 4°C. [Secondary antibody: HRP-conjugated Goat anti-Rabbit IgG (H+L) (SA0002) at 1:10000 dilution. [Lysates/proteins: 10ng, 5ng, 1ng μ g per lane. [Blocking buffer: 3% nonfat dry milk in TBST. [Detection: ECL Basic Kit. [Exposure time: 20s.