

Keap1 (AX0283) Rabbit mAb

M3272

Key Features

Host Species

- Rabbit

Reactivity

- Human, Mouse, Rat,

Applications

- WB,IHC,IF,IP,ELISA

MW

- 70kDa (Calculated)
- 60-70kDa (Observed)

Isotype

- IgG

Recommended Dilution Ratios

Application

Western Blotting (WB)

Immunohistochemistry (IHC) (Paraffin)

IF/ICC

ELISA

Immunoprecipitation (IP)

Dilution

1:2000-10000

1:200-1000

1:200-1000

1:5000-20000

1:50-200

Storage

Storage at -15°C to -25°C/1 year (Do not lower than -25°C)

Storage buffer PBS, 50% glycerol, 0.05% Proclin 300, 0.05%BSA

Basic Information

Clonality Monoclonal

Clone Number AX0283

Immunogen Recombinant protein of the human Keap1 protein.

Specificity The antibody can specifically recognize human Keap1 protein.

Purification Affinity purification Protein A

Concentration Product concentration may vary by batch. Please refer to the product COA for details.

Target Information

Gene name KEAP1 INRF2 KIAA0132 KLHL19

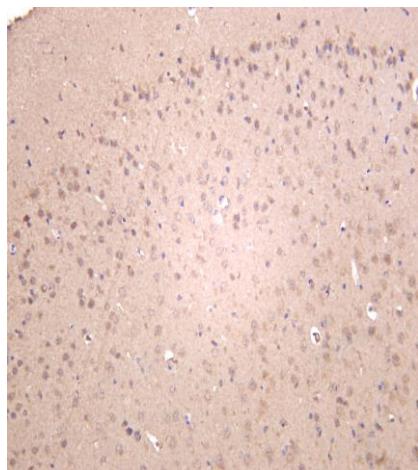
Protein Name Keap1

Database Link	Organism	Swiss Prot.	Gene ID
	Human	Q14145	9817
	Mouse	Q9Z2X8	50868
	Rat	P57790	117519

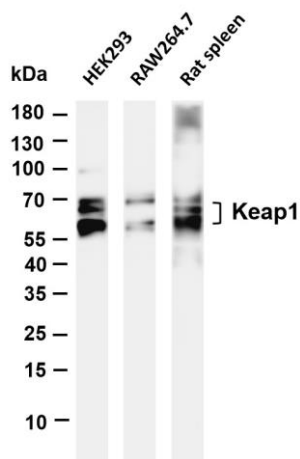
Background

kelch like ECH associated protein 1(KEAP1) **Homo sapiens** This gene encodes a protein containing KELCH-1 like domains, as well as a BTB/POZ domain. Kelch-like ECH-associated protein 1 interacts with NF-E2-related factor 2 in a redox-sensitive manner and the dissociation of the proteins in the cytoplasm is followed by transportation of NF-E2-related factor 2 to the nucleus. This interaction results in the expression of the catalytic subunit of gamma-glutamylcysteine synthetase. Two alternatively spliced transcript variants encoding the same isoform have been found for this gene. [provided by RefSeq, Jul 2008],

Validation Data



Mouse brain was stained with anti-Keap1 (PT0444R) rabbit antibody



Various whole cell lysates were separated by 4-20% SDS-PAGE, and the membrane was blotted with anti-Keap1 (PT0444R) antibody. The HRP-conjugated Goat anti-Rabbit IgG(H + L) antibody was used to detect the antibody.

Lane 1: HEK293

Lane 2: RAW264.7

Lane 3: Rat spleen

Predicted band size: 70kDa

Observed band size: 60-70kDa