

## ATG16L1 (AX0534) Rabbit mAb

**M3485**

### Key Features

#### Host Species

- Rabbit

#### Reactivity

- Human, Mouse, Rat

#### Applications

- WB,IHC,IF,IP,ELISA

#### MW

- 68kDa (Calculated)
- 68kDa (Observed)

#### Isotype

- IgG

### Recommended Dilution Ratios

#### Application

Western Blotting (WB)  
 Immunohistochemistry (IHC) (Paraffin)  
 IF/ICC  
 ELISA  
 Immunoprecipitation (IP)

#### Dilution

1:2000-10000  
 1:200-1000  
 1:200-1000  
 1:5000-20000  
 1:50-200

### Storage

<b>Storage at</b>	-15°C to -25°C/1 year (Do not lower than -25°C)
<b>Storage buffer</b>	PBS, 50% glycerol, 0.05% Proclin 300, 0.05%BSA

### Basic Information

<b>Clonality</b>	Monoclonal
<b>Clone Number</b>	AX0534
<b>Immunogen</b>	Recombinant protein of the human ATG16L1 protein.
<b>Specificity</b>	The antibody can specifically recognize human ATG16L1 protein.
<b>Purification</b>	Affinity purification Protein A
<b>Concentration</b>	Product concentration may vary by batch. Please refer to the product COA for details.

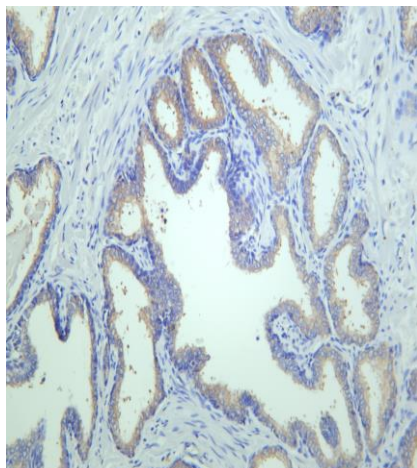
### Target Information

<b>Gene name</b>	ATG16L1		
<b>Protein Name</b>	ATG16L1		
<b>Database Link</b>	<b>Organism</b>	<b>Swiss Prot.</b>	<b>Gene ID</b>
	Human	Q676U5	55054
	Mouse	Q8C0J2	77040
	Rat		

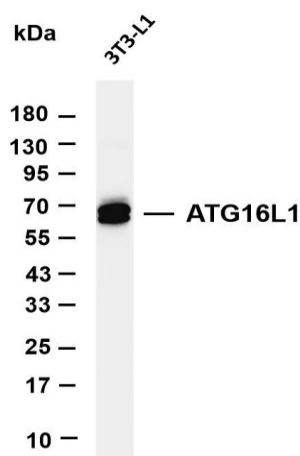
## Background

The protein encoded by this gene is part of a large protein complex that is necessary for autophagy, the major process by which intracellular components are targeted to lysosomes for degradation. Defects in this gene are a cause of susceptibility to inflammatory bowel disease type 10 (IBD10). Several transcript variants encoding different isoforms have been found for this gene.[provided by RefSeq, Jun 2010],

## Validation Data



Human prostate was stained with anti-ATG16L1 (PT0690R) rabbit antibody



Various whole cell lysates were separated by 4-20% SDS-PAGE, and the membrane was blotted with anti-ATG16L1 (PT0690R) antibody. The HRP-conjugated Goat anti-Rabbit IgG(H + L) antibody was used to detect the antibody.

Lane 1: 3T3-L1

Predicted band size: 68kDa

Observed band size: 68kDa