

## IKB epsilon (AX0417) Rabbit mAb

**M3564**

### Key Features

#### Host Species

- Rabbit

#### Reactivity

- Human

#### Applications

- WB, IHC, IF/ICC, IP

#### MW

- 
- 55kDa (Observed)

#### Isotype

- IgG

### Recommended Dilution Ratios

#### Application

Western Blotting (WB)

Immunohistochemistry (IHC) (Paraffin)

IF/ICC

Immunoprecipitation (IP)

#### Dilution

1:1000-5000

1:100-300

1:100-300

1:50-100

### Storage

**Storage at** -15°C to -25°C/1 year(Do not lower than -25°C)

**Storage buffer** PBS, 50% glycerol, 0.05% Proclin 300, 0.05%BSA

### Basic Information

**Clonality** Monoclonal

**Clone Number** AX0417

**Immunogen** Recombinant protein of the human IKB epsilon protein.

**Specificity** The antibody can specifically recognize human IKB epsilon protein.

**Purification** Affinity purification Protein A

**Concentration** Product concentration may vary by batch. Please refer to the product COA for details.

### Target Information

**Gene name** NFKBIE,IKBE

**Protein Name** IKB epsilon

#### Database Link

#### Organism

Human

Mouse

Rat

#### Swiss Prot.

O00221

O54910

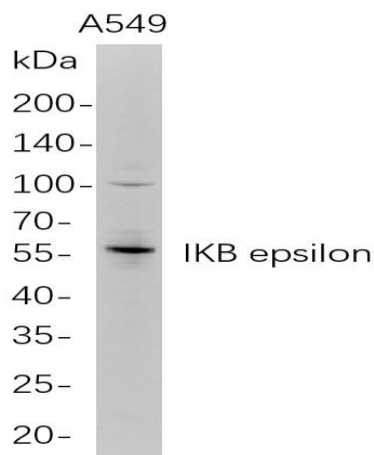
#### Gene ID

4794

18037

**Background**

The protein encoded by this gene binds to components of NF-kappa-B, trapping the complex in the cytoplasm and preventing it from activating genes in the nucleus. Phosphorylation of the encoded protein targets it for destruction by the ubiquitin pathway, which activates NF-kappa-B by making it available to translocate to the nucleus. [provided by RefSeq, Sep 2011],

**Validation Data**

Western Blot analysis of A549 whole cell lysates were separated by 4-20% SDS-PAGE, and the membrane was blotted with anti-IKB epsilon rabbit mAb. The HRP-conjugated Goat anti-Rabbit IgG(H + L) antibody was used to detect the antibody.