

LAMB1 (AX0301) Rabbit mAb

M3301

Key Features

Host Species

- Rabbit

Reactivity

- Human, Mouse, Rat,

Applications

- WB,IHC,IF,IP,ELISA

MW

- 198kDa (Calculated)
- 240kDa (Observed)

Isotype

- IgG

Recommended Dilution Ratios

Application

Western Blotting (WB)
 Immunohistochemistry (IHC) (Paraffin)
 IF/ICC
 ELISA
 Immunoprecipitation (IP)

Dilution

1:2000-10000
 1:200-1000
 1:200-1000
 1:5000-20000
 1:50-200

Storage

Storage at	-15°C to -25°C/1 year (Do not lower than -25°C)
Storage buffer	PBS, 50% glycerol, 0.05% Proclin 300, 0.05%BSA

Basic Information

Clonality	Monoclonal
Clone Number	AX0301
Immunogen	Recombinant protein of the human LAMB1 protein.
Specificity	The antibody can specifically recognize human LAMB1 protein.
Purification	Affinity purification Protein A
Concentration	Product concentration may vary by batch. Please refer to the product COA for details.

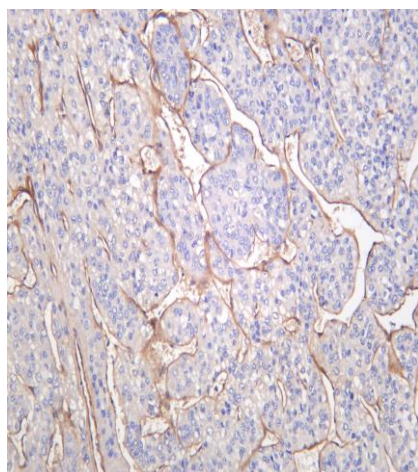
Target Information

Gene name	LAMB1		
Protein Name	LAMB1		
Database Link	Organism	Swiss Prot.	Gene ID
	Human	P07942	3912
	Mouse	P02469	
	Rat		

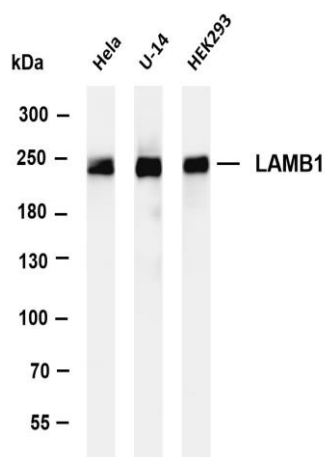
Background

Laminins, a family of extracellular matrix glycoproteins, are the major noncollagenous constituent of basement membranes. They have been implicated in a wide variety of biological processes including cell adhesion, differentiation, migration, signaling, neurite outgrowth and metastasis. Laminins are composed of 3 non identical chains: laminin alpha, beta and gamma (formerly A, B1, and B2, respectively) and they form a cruciform structure consisting of 3 short arms, each formed by a different chain, and a long arm composed of all 3 chains. Each laminin chain is a multidomain protein encoded by a distinct gene. Several isoforms of each chain have been described. Different alpha, beta and gamma chain isomers combine to give rise to different heterotrimeric laminin isoforms which are designated by Arabic numerals in the order of their discovery, i.e. alpha1beta1gamma1 heterotrimer is laminin 1. The bio

Validation Data



Human hepatocellular carcinoma was stained with anti-LAMB1 (PT0479R) rabbit antibody



Various whole cell lysates were separated by 4-8% SDS-PAGE, and the membrane was blotted with anti-LAMB1 (PT0479R) antibody. The HRP-conjugated Goat anti-Rabbit IgG(H + L) antibody was used to detect the antibody.

Lane 1: HeLa

Lane 2: U-14

Lane 3: HEK293

Predicted band size: 198kDa

Observed band size: 240kDa