

CHOP (AX0073) Rabbit mAb

M3056

Key Features

Host Species

- Rabbit

Reactivity

- Human, Mouse, Rat,

Applications

- WB,IHC,IF,IP,ELISA

MW

- 19kDa (Calculated)
- 30kDa (Observed)

Isotype

- IgG

Recommended Dilution Ratios

Application

Western Blotting (WB)

Immunohistochemistry (IHC) (Paraffin)

IF/ICC

ELISA

Immunoprecipitation (IP)

Dilution

1:1000-5000

1:1000-4000

1:200-1000

1:5000-20000

1:50-200

Storage

Storage at -15°C to -25°C/1 year (Do not lower than -25°C)

Storage buffer PBS, 50% glycerol, 0.05% Proclin 300, 0.05%BSA

Basic Information

Clonality Monoclonal

Clone Number AX0073

Immunogen Recombinant protein of the human CHOP protein.

Specificity The antibody can specifically recognize human CHOP protein.

Purification Affinity purification Protein A

Concentration Product concentration may vary by batch. Please refer to the product COA for details.

Target Information

Gene name DDIT3

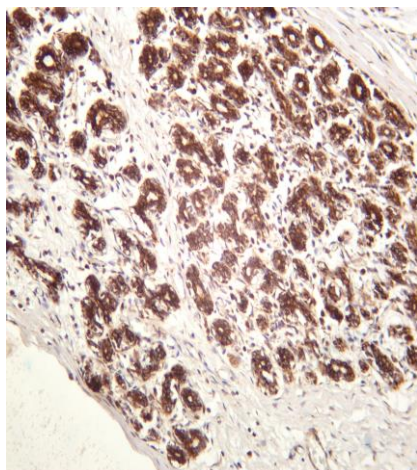
Protein Name CHOP

Database Link	Organism	Swiss Prot.	Gene ID
	Human	P35638	1649
	Mouse	P35639	13198
	Rat	Q62857	

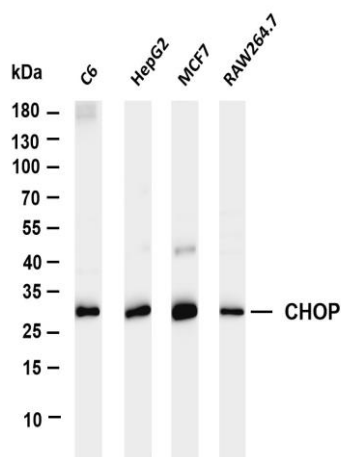
Background

This gene encodes a member of the CCAAT/enhancer-binding protein (C/EBP) family of transcription factors. The protein functions as a dominant-negative inhibitor by forming heterodimers with other C/EBP members, such as C/EBP and LAP (liver activator protein), and preventing their DNA binding activity. The protein is implicated in adipogenesis and erythropoiesis, is activated by endoplasmic reticulum stress, and promotes apoptosis. Fusion of this gene and FUS on chromosome 16 or EWSR1 on chromosome 22 induced by translocation generates chimeric proteins in myxoid liposarcomas or Ewing sarcoma. Multiple alternatively spliced transcript variants encoding two isoforms with different length have been identified. [provided by RefSeq, Aug 2010],

Validation Data



Human breast carcinoma was stained with anti-CHOP (PT0105R) rabbit antibody



Various whole cell lysates were separated by 4-20% SDS-PAGE, and the membrane was blotted with anti-CHOP (PT0105R) antibody. The HRP-conjugated Goat anti-Rabbit IgG(H + L) antibody was used to detect the antibody.

Lane 1: C6

Lane 2: HepG2

Lane 3: MCF7

Predicted band size: 19kDa

Observed band size: 30kDa