

CytoGlow™

**p16-INK4a (Phospho-Ser152)
Colorimetric Cell-Based ELISA Kit**

Catalog #: CBP2043

Reactivity: Human, Rat, Mouse

Storage: 4°C

Expiration: 6 months from receipt

**For Research Purposes Only. Not
Intended for Diagnostic or Clinical
Procedures.**

Manual Version: 23.58.4587

CONTENTS

Introduction.....	3
<i>Colorimetric Cell-Based ELISAs</i>	
<i>p16-INK4a (Phospho-Ser152) Cell-Based Specificity</i>	
Assay Format.....	4
Materials Included/ Storage and Stability.....	5
Additional Materials Required.....	5
<i>Antibody Specificity.....</i>	<i>6</i>
<i>Anti-p16-INK4a (Phospho-Ser152) Antibody WB</i>	
<i>Anti-p16-INK4a Antibody WB</i>	
<i>Anti-GAPDH Antibody WB</i>	
Reagent Preparation.....	7
Assay Protocol.....	8
Data Analysis.....	10
Short Protocol.....	11
Health and Safety Precautions/Assay Restrictions.....	12
Troubleshooting Guide.....	13
ELISA Plate Template.....	14
Technical Support.....	15

ASSAY PRINCIPLES

p16-INK4a (Phospho-Ser152) Colorimetric Cell-Based ELISA

The p16-INK4a (Phospho-Ser152) Colorimetric Cell-Based ELISA Kit allows for the detection of various target proteins and the effects that certain stimulation conditions have on target protein expression in different cell lines. Qualitative determination of target protein concentration is achieved by an indirect ELISA format. In essence, the target protein is captured by target-specific primary (1°) antibodies while the HRP-conjugated secondary (2°) antibodies bind the Fc region of the 1° antibody. Through this binding, the HRP enzyme conjugated to the 2° antibody can catalyze a colorimetric reaction upon substrate addition.

Upon sufficient color development, the reaction can be terminated through addition of Stop Solution (2 N Sulfuric Acid) where the color of the solution will turn yellow. The absorbance of each well can then be read by a spectrophotometer, allowing for generation of a standard curve and subsequent determination of protein concentration.

The p16-INK4a (Phospho-Ser152) Cell-Based ELISA Kit is a convenient, lysate-free, high throughput and sensitive assay kit that can monitor target protein Phosphorylation and expression profile in cells. The kit can be used for measuring the relative amounts of phosphorylated proteins in cultured cells as well as screening for the effects that various treatments, inhibitors (ie. siRNA or chemicals), or activators have on p16-INK4a (Phospho-Ser152).

ASSAY FORMAT


**α-Target
Primary Antibody**



Cells are seeded onto the bottom of each well. The cells are quenched, fixed and the well is blocked.


**α-Primary IgG
Secondary Antibody**



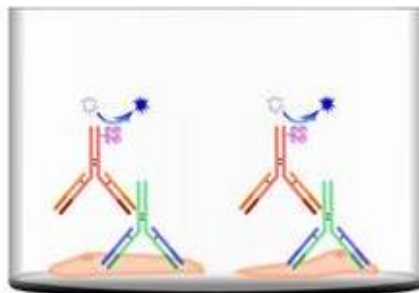
Primary antibodies specific for the target antigen are added and allowed to bind to their respective epitopes.


HRP Conjugate



HRP-conjugated secondary antibodies specific for the primary antibody are added and allowed to bind to their respective epitopes.


Unreacted TMB




**Blue TMB
Diimine Product**

TMB substrate is converted to the blue TMB diimine via the HRP enzyme. Upon addition of acid, the reaction terminates and the wells can be read at 450 nm.

MATERIALS INCLUDED

Reagent	Quantity	Storage/Stability after first use
96-Well Cell Culture Clear-Bottom Microplate	2 Plates	-
10x TBS	30 ml (10x)	1 month at 4°C
Quenching Buffer	24 ml (1x)	
Blocking Buffer	50 ml (1x)	
15x Wash Buffer	60 ml (15x)	
100x Anti-p16-INK4a (Phospho-Ser152) Antibody	60 µl (100x)	
100x Anti-p16-INK4a Antibody	60 µl (100x)	
100x Anti-GAPDH Antibody	60 µl (100x)	
HRP-Conjugated Anti-Rabbit IgG Antibody	12 ml (1x)	
HRP-Conjugated Anti-Mouse IgG Antibody	12 ml (1x)	
Primary Antibody Diluent	12 ml (1x)	
Ready to Use Substrate	12 ml (1x)	
Stop Solution	12 ml (1x)	
Crystal Violet Solution	12 ml (1x)	
SDS Solution	24 ml (1x)	
Adhesive Plate Seals	2 Seals	-

ADDITIONAL MATERIALS REQUIRED

The following materials and equipment are NOT provided in this kit but are necessary to successfully conduct the experiment:

- Microplate reader able to measure absorbance at 450 nm and/or 595 nm for Crystal Violet Cell Staining (Optional)
- Micropipettes with capability of measuring volumes ranging from 1 µl to 1 ml
- **37% paraformaldehyde stock concentration or 8% paraformaldehyde from other sources**
- Deionized or sterile water
- Squirt bottle, multichannel pipette and/or automated microplate washer
- Computer software capable of generating or displaying logarithmic functions
- Absorbent papers or vacuum aspirator
- Test tubes or microfuge tubes capable of storing ≥1 ml
- Orbital shaker, Incubator, and Stimulants
- **Poly-L-Lysine or Poly-D-Lysine for suspension or loosely attaching cells**

ANTIBODY SPECIFICITY

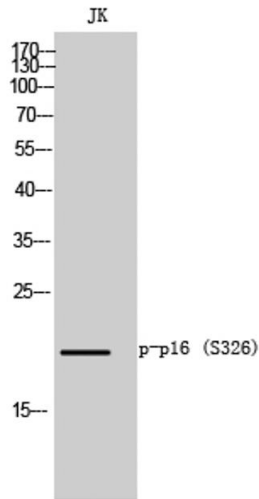


Figure 1. Anti-p16-INK4a (Phospho-Ser152)

Western Blot analysis of JK cells using Phospho-p16 (S326) Polyclonal Antibody diluted at 1:500

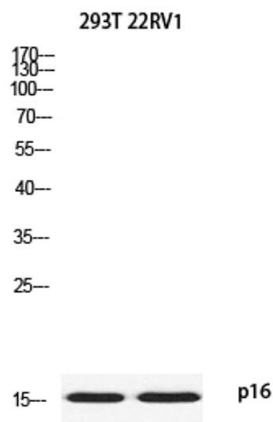


Figure 2. Anti-p16-INK4a Antibody WB

Western blot analysis of 293T 22RV1 using p16 antibody. Antibody was diluted at 1:2000. Secondary antibody (catalogNo.:SA0002) was diluted at 1:20000

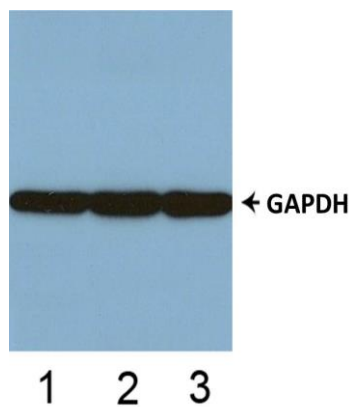


Figure 3. Anti-GAPDH Antibody WB

Western blot analysis of tissue lysates from human (1), mouse (2) and rat (3).

REAGENT PREPARATION

Ensure that all supplied solutions are at ambient temperature before use. It is recommended to conduct assays for all controls and samples in duplicate. Sufficient reagents are provided to assay 192 wells; therefore, on the day of the experiment, prepare only the required amount. During incubation steps, use an orbital shaker set at 200 rpm to ensure proper equilibration of solutions in the cell culture plate wells. **All other provided solutions are ready to use.**

1. Dilute the 10x TBS to 1x TBS by combining 9 volumes of ddH₂O and 1 volume of 10x TBS.
2. Dilute the 15x Wash Buffer to 1x Wash Buffer using 14 volumes of ddH₂O and 1 volume of 15x Wash Buffer.
3. Prepare the Fixing solution to 4% paraformaldehyde (for adherent cell lines) or 8% paraformaldehyde (for suspension or loosely attaching cell lines). Dilute 37% paraformaldehyde with 1x PBS to desired paraformaldehyde percentage.
4. For suspension or loosely attached cells: Prepare Poly L Lysine to working concentration as stated in manual. (Not included, recommended Sigma Cat# P4832).

If the cell line is known to digest Poly-L-Lysine, Poly-D-Lysine may be an alternative for this step. Follow the manufacturer's instructions if using a different Poly-L-Lysine or Poly-D-Lysine.

5. Prepare a 1x dilution of all three 100x Primary Antibodies (Phosphorylation Specific, Non-Phosphorylation Specific, and Anti-GAPDH) by using Primary Antibody Diluent at a ratio of 1:100.

ASSAY PROTOCOL

1. Seed 100 µl of 20,000 adherent cells into each well in a 96-well plate.

Note: *Optimal seeding concentrations should be determined by investigator and experimental goals.*

For suspension cells and loosely attached cells:

- a. Evenly coat plates evenly with 20 µL of Poly-L-Lysine (Sigma Cat# P4832).
 - b. After 5 minutes, remove the Poly-L-Lysine solution by aspiration and rinse the wells once with tissue culture-grade water.
 - c. Allow the plate to dry for 2 hours before seeding the cells.
2. Incubate cells overnight or at least 6 hours at 37°C, 5% CO₂.

3. Treat the cells as desired.

4. Gently aspirate the cell culture medium and rinse each well twice with 200 µl of 1x TBS.

Note: *For loosely attached cells, omit this 1x TBS rinsing step to avoid cell loss. Instead, proceed directly to the fixing instructions in Step 5 after removing the culture medium.*

5. Gently remove the 1x TBS and fix the cells with 100 µl of 8% paraformaldehyde per well. Incubate for 20 minutes at room temperature (RT).

Caution: *Paraformaldehyde is volatile. Use appropriate personal protective equipment (PPE) such as gloves, mask, and goggles.*

6. Aspirate the solution and add 300 µl of 1x Wash Buffer to each well. Gently shake the plate on an orbital shaker for 2-3 minutes. Repeat this process 3 times. After the final wash, invert the plate and tap it against clean paper towels to remove any remaining liquid.

Note: *After this step, plates can be stored at 4°C for up to a week.*

7. Add 100 µl Quenching Buffer to each well and incubate for 20 mins at RT.
8. Repeat the washing process as described in Step 6
9. Add 200 µl of Blocking Buffer and incubate for 1 hour at RT.
10. Repeat the washing process as described in Step 6

11. Add 50 μ l of 1x Primary Antibody solutions into each well and incubate overnight at 4°C. If target concentration is known to be high, incubate for 2 hours at RT. Designate 2 wells for negative control by omitting the 1x Primary Antibodies.
12. Repeat the washing process as described in Step 6
13. Add 50 μ l of HRP-Conjugated Anti-Rabbit IgG Antibody into the wells incubated with 1x Anti-p16-INK4a (Phospho-Ser152) Antibody and 1x Anti-p16-INK4a Antibody.
14. Add 50 μ l of HRP-Conjugated Anti-Mouse IgG Antibody into the wells incubated with 1x Anti-GAPDH Antibody.
15. Incubate the plate for 1.5 hours at RT.
16. Repeat the washing process as described in Step 6
17. Add 50 μ l of Ready to use Substrate into each well, cover plate from light, and incubate for 15-20 mins at RT.
18. Add 50 μ l of Stop Solution into each well and read at 450 nm.
19. Aspirate the solution and add 300 μ l of 1x TBS to each well. Gently shake the plate on an orbital shaker for 2-3 minutes. Repeat this process 2 times. After the final wash, invert the plate and tap it against clean paper towels to remove any remaining liquid. Allow plate to air dry for 5 mins at RT.
20. Add 50 μ l of Crystal Violet Solution into each well and incubate for 30 mins at RT.

Note: *Crystal Violet is an intense stain. Avoid contact with skin and clothing.*
21. Dip the plate into a bucket of water in the sink while keeping the water running, and carefully rinse the wells with ddH₂O until no more color is visible. Let the plate to dry for 30 mins.
22. Add 100 μ l of SDS Solution into each well and incubate for 1 hour at RT.
23. Read absorbance at 595 nm with microplate reader. If absorbance is too high, the solubilized Crystal Violet Solution may be diluted tenfold with ddH₂O on a separate 96-well plate.

DATA ANALYSIS

Background subtraction

Average the duplicate or triplicate absorbance readings for each control and sample, subtracting them from the averaged absorbance for wells where primary antibodies have been omitted.

Anti-GAPDH Internal positive control

The OD450 values obtained ensure the assay is functioning, and cell densities between wells should be proportionate to seeding concentration. Stimulation of cells should impact target primary antibody absorbance values, with no effect on the anti-GAPDH absorbance.

Crystal Violet Staining Normalization

The Crystal Violet staining method enables intensity normalization within the same well. By using the ratio, the OD450 readings obtained can be normalized with the OD595 values. This constitutes a within-well method of analysis.

If the absorbance was too high and a tenfold dilution was required. Multiply all values by 10 prior to normalization.

- a. $OD_{450} \text{ anti-p16-INK4a (Phospho-Ser152)} / OD_{595} \text{ Crystal Violet}$.
- b. $OD_{450} \text{ anti-p16-INK4a} / OD_{595} \text{ Crystal Violet}$.

By doing so, the expression levels of p16-INK4a (Phospho-Ser152) and p16-INK4a are adjusted to account for the cell density present in each well.

Phosphorylation to Non-Phosphorylation Comparison

After normalization Crystal Violet staining, the resultant proportional values can be used to analyze the effects of stimulants in this assay.

A non-phosphorylated primary antibody is included to normalize the absorbance values between phosphorylated to non-phosphorylated values.

Both antibodies utilize the proportion for analysis as follows:

$OD_{450} \text{ (CV Normalized) (p16-INK4a (Phospho-Ser152))} /$

$OD_{450} \text{ (CV Normalized) (p16-INK4a)}$

SHORT PROTOCOL

Seed cells into wells and incubate overnight at 37°C, 5% CO₂



Apply desired treatment conditions



Add 100ul of Fixing Solution and incubate 20 minutes at room temperature



Add 100ul of Quenching Buffer and incubate 20 minutes at room temperature



Add 200ul of Blocking Buffer and incubate for 1 hour at room temperature



Add 50ul of 1x Primary Antibodies and incubate overnight at 4°C



Add 50ul of HRP-Conjugated Secondary Antibodies and incubate for 1.5 hours at room temperature



Add 50ul of Ready-to Use Substrate and incubate for 30 minutes at room temperature



Add 50ul of Stop Solution and read OD at 450nm



HEALTH AND SAFETY PRECAUTIONS

- Reagents provided in this kit may be harmful if ingested, inhaled or absorbed through the skin.
- Fixing Solution contains formaldehyde. Formaldehyde is known to be a highly toxic reagent. Personal protection is strongly recommended while working with this chemical.
- Stop Solution contains 2 N Sulfuric Acid (H_2SO_4) and is an extremely corrosive agent. Please wear proper eye, hand and face protection when handling this material. When the experiment is finished, be sure to rinse the plate with copious amounts of running water to dilute the Stop Solution prior to disposing the plate or strips.
- Crystal Violet is an intense stain reagent. Avoid contact stain and clothing.

ASSAY RESTRICTIONS

- This ELISA kit is intended for research purposes only, NOT diagnostic or clinical procedures of any kind.
- Materials included in this kit should NOT be used past the expiration date on the kit label.
- Reagents or substrates included in this kit should NOT be mixed or substituted with reagents or substrates from any other kits.
- Variations in pipetting technique, washing technique, operator laboratory technique, kit age, incubation time or temperature may cause differences in binding affinity of the materials provided.
- The assay is designed to eliminate interference and background by other cellular macromolecules or factors present within any biological samples. However, the possibility of background noise cannot be fully excluded until all factors have been tested using the assay kit.
- Individual results may vary due to differences in technique, plasticware and water sources.

TROUBLESHOOTING GUIDE

Problem	Cause	Solution
Low Signal	Storage and Expiration	Read Manual for storage condition and expiration.
	Antibody Dilution	Dilute antibody 1:100 with Antibody Diluent.
	Low Cell Number	Seed more cells.
	Cells Detach from Well-Bottoms	Add solutions slowly from the side wall of the wells. Use Poly-L-Lysine to coat the plate period seeding the cells, if necessary.
High Background	Washing	Remove Wash Buffer completely.
	High Cell Number	Reduce the amount of seeded cells.
Variation	Pipetting	Check and/or calibrate pipettes.
	Washing	Remove Wash Buffer completely.
	Cells Detach from Well-Bottoms	Add solutions slowly from the side wall of the wells. Use Poly-L-Lysine to coat the plate period seeding the cells, if necessary.

ELISA PLATE TEMPLATE

	A	B	C	D	E	F	G	H
1								
2								
3								
4								
5								
6								
7								
8								
9								
10								
11								
12								

TECHNICAL SUPPORT

For troubleshooting, information or assistance, please go online to www.assaybiotech.com or contact us at:

Assay Biotechnology Company, Inc.
2200 Ringwood Ave.
San Jose, CA 95131
United States of America

Email: tech@assaybiotech.com

Phone: (408) 747-0185
Toll-Free Phone: (877) 883-7988

Fax: (408) 747-0145
Toll-Free Fax: (877) 610-9758



**Over 3,000 Assay Kits including Sandwich, Cell-Based and
Transcription Factor ELISA Kits**

Visit us at www.assaybiotech.com